

Modular Rainwater Harvesting System

The Need to Harvest Rainwater

With Rapid Infrastructural Developments & abrupt Groundwater Extraction, Percolation & Level of Groundwater has drastically reduced thus affecting our Ecology. Efficient Rainwater Harvesting is the Need of the Hour to help Conserve our Environment & Minimise the Deterioration incurred overtime

Mandations & Regulations

In accordance with the Regulations enumerated by Central Ground Water Board (CGWB) & Guidelines by National Green Tribunal (NGT), the Central & State Governments have made Installation of Rainwater Harvesting Systems Mandatory for both New & Recent Commercial & Residential Developments in numerous parts of the country

Solution?

Modular Rainwater Harvesting System

The Modern Rainwater Harvesting System comprises of Polymer based Percolation Tank wrapped & Heat-sealed in High Quality Geotextile Sheets. The Inlet houses a State-of-the-Art Filtration Mechanism which keeps the Tank Clean & is also Easy to Maintain



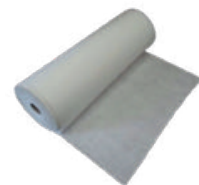
The Modular Harvesting System Comprises of:



High Quality Honeycomb Polymer Module



High Efficiency Rainwater Filter & Cross section



High Quality Geo Textile Sheets

Benefits of Installing Modular Rainwater Harvesting System



Quick Installation



Eco Friendly



30+ Tonnes Load Bearing Capacity



Surface Use for Parking/Garden



Efficient Filtration



Easy Maintenance



High Water Percolation Rate



Good Water Quality



Usage Life of 50+ Years



Reusable System

SHRI GANGA BORING CO.

Rainwater Harvesting Systems | Borewell Drilling | Specialised Drilling | Allied Services

Regd. Office: Shop No. 26, First Floor, Transport Nagar, Jwalapur, Haridwar, Uttarakhand-249404

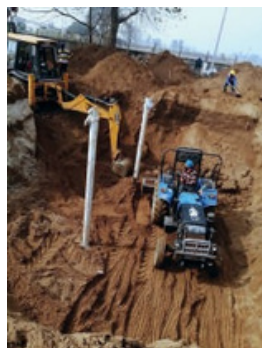
Corporate Office: Plot No 21-22, RPS Chowk, Sector-87, Greater Faridabad Haryana - 121002



Scan to Visit Our Website

+91-9411111146, +91-9719000235 | gangaboring@gmail.com | www.gangaboring.com

Installation Process of Modular Rainwater Harvesting System



Step 1: Excavation is under process after Completion of Borewell



Step 2: Preparation of Base for Laying of High Quality Geotextile Sheets



Step 3: Laying of Geotextile Sheets for Stacking of Polymer Modules



Step 4: Stacking of Polymer Modules for Installation of Rainwater Harvesting Tank



Step 5: Sealing of Geotextile Sheets after Installation of Polymer Modules



Step 6: Installation of Efficient Filtration Mechanism



Step 7: Landscaping can be executed on Top of Modular Rainwater Harvesting System

Difference between Modular & Conventional Rainwater Harvesting System

Features	Modular	Conventional
Usable Capacity	95%	55-60%
Utilization of Space	Can be Used for Parking, Gardens etc.	Top Surface Cannot be Utilized
Maintenance	Easy to Clean High Efficiency Filtration	Easily gets Clogged & Very Tough to Clean
Rate of Percolation	Water Percolates from 5 Sides plus Borewell	Water Percolates only through Borewell
Usage Life	50+ Years	5 to 10 years as Tanks need Repair
Environment Friendly	Eco Friendly Structure	Non-Eco Friendly Concrete Structure

Recommended/Implemented By



Central Ground Water Board (CGWB)



Green Rating for Integrated Habitat Assessment (GRIHA)



Municipal Corporation Gurugram (MCG)



New Delhi Municipal Council (NDMC)

SHRI GANGA BORING CO.

Rainwater Harvesting Systems | Borewell Drilling | Specialised Drilling | Allied Services

Regd. Office: Shop No. 26, First Floor, Transport Nagar, Jwalapur, Haridwar, Uttarakhand-249404

Corporate Office: Plot No 21-22, RPS Chowk, Sector-87, Greater Faridabad Haryana - 121002



Scan to Visit Our Website

+91-9411111146, +91-9719000235 | gangaboring@gmail.com | www.gangaboring.com